

Violin

# Arrival of the Queen of Sheba

G. F. HANDEL

Allegro

The image displays a violin score for the piece 'Arrival of the Queen of Sheba' by George Frideric Handel. The score is written in G minor (one flat) and common time (C). It begins with a treble clef and a tempo marking of 'Allegro'. The music is characterized by a driving, rhythmic pattern of eighth and sixteenth notes. The score is divided into ten staves, with measure numbers 1, 4, 7, 10, 13, 17, 21, 25, 29, 33, 37, and 41 indicated at the start of each line. Two specific sections are highlighted with boxed letters: 'A' is placed above the first measure of the seventh staff (measure 17), and 'B' is placed above the first measure of the ninth staff (measure 29). The piece concludes with a final cadence in the tenth staff.

45



49



53



57



61



65



68



72



77



81



84



87



Viola

# Arrival of the Queen of Sheba

G. F. HANDEL

Allegro

7

12

15 **A**

20

24

27

31 **B**

36

39

43

47 

52 

57 

63 

68 

73 

78 

83 

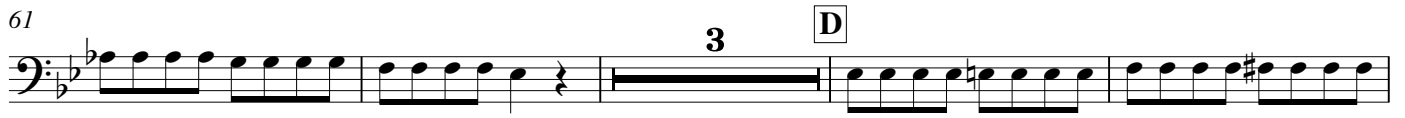
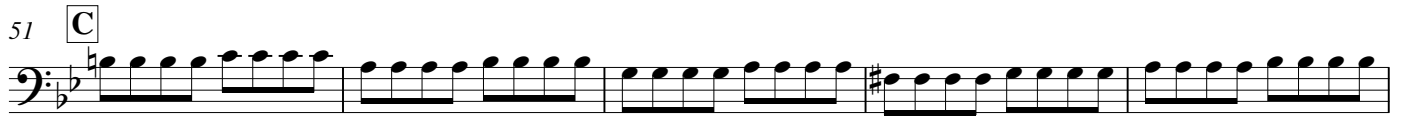
86 

Violoncello

# Arrival of the Queen of Sheba

G. F. HANDEL

**Allegro**



75



80

**E**



85

